

# Sure Cavity™ & Gravity Cavity™

SC 5016, SC 5032  
GC 1816, GC 1832  
SCMM 2516, SCMM 2532

## Rainscreen Drainage Plane



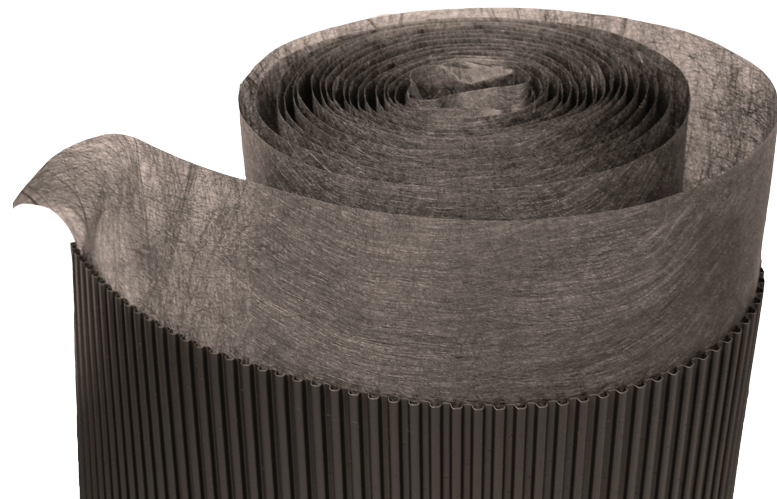
### Applications

- ✔ Stucco, Thin Stone or Thin Brick
- ✔ Natural Stone
- ✔ Full Brick
- ✔ Fiber Cement, Cedar Siding
- ✔ Roofing Applications

*10mm Sure Cavity, Sure Cavity, Gravity Cavity (top to bottom)*

## Why Rainscreen? No Wall Is Waterproof

Today's "tighter" buildings increase the risk for moisture and mold problems. Rainscreen systems greatly reduce this risk by enabling moisture to swiftly exit the building envelope. Rainscreens are inexpensive insurance to mitigate the risk of wall failure. Smart builders keep walls dry with Sure Cavity & Gravity Cavity.



*Rigid channels don't compress, creating predictable drainage*

## Advantage

- ✔ Unobstructed Drainage
- ✔ Vapor Permeable for Full Ventilation
- ✔ Resists Compression, Reduces Waviness
- ✔ Cut Install Time by 50% (vs. furring strips)
- ✔ Mortar Blocking Fabric & Bug Screen
- ✔ Plastic is 100% Recycled Content
- ✔ 20 Year Warranty

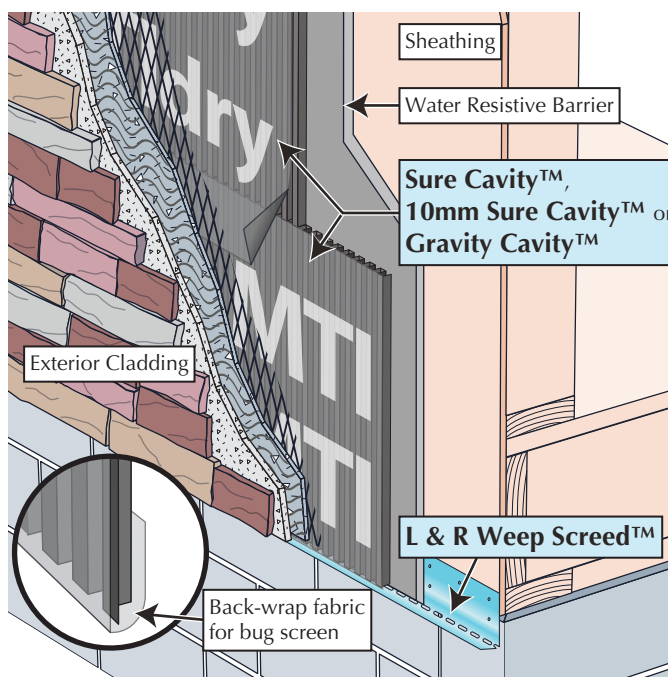


*Thin Stone with Sure Cavity rainscreen drainage plane*

## Installation

- Install Sure Cavity™ or Gravity Cavity™ rainscreen outboard of water resistive barrier. Mortar-blocking fabric faces installer.
- Back-wrap 4" fabric skirt to create bug screen on the lowest course. 4" fabric skirt will lap shingle fashion in subsequent courses.
- Corrugated plastic to be butted at seams. Do not overlap plastic. Not necessary to align channels. Wrap rainscreen around corners and extend to nearest structural member.
- Fasten every 24" on-center with a hammer stapler over nailable surfaces. On masonry backup walls use dime-size dabs of adhesive to hold in place. Installing lath or veneer will ultimately sandwich rainscreen in place.

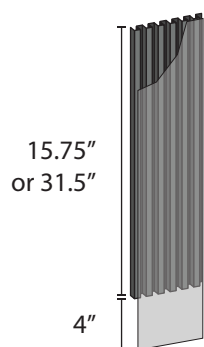
Complete Installation at [MTIdry.com/installation](http://MTIdry.com/installation)



## Technical Information<sup>1</sup>

<sup>1</sup>Technical data shown for Sure Cavity SC 5016, SC 5032.

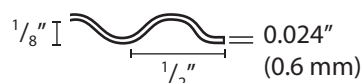
|                                 |  |                             |  |
|---------------------------------|--|-----------------------------|--|
| <b>Material Description</b>     | Perforated and corrugated plastic made of 0.6 mm pre-consumer recycled high-impact polystyrene with an adhered spun-bond polypropylene fabric. |                             |  |
| <b>Drainage Efficiency</b>      | Over 97% (ASTM 2273, ICC EG356)  | <b>Fungi Resistance</b>     | Does not support fungal growth (ASTM C 1338)                 |
| <b>Water Vapor Transmission</b> | 8.3 grains/hr•ft <sup>2</sup> (ASTM E 96-05)   | <b>Compressive Strength</b> | 249 kPa / 5198 psf (ASTM D1621-00)                           |
| <b>Permeability</b>             | 4.2 perm•in (ASTM E 96-05)   | <b>UV Exposure</b>          | Over 9 weeks in accelerated UV testing (ICC EG356, ICC AC48) |
| <b>Vapor Permeance</b>          | 20.3 Perms (ASTM E 96-05)  |                             |  |



### Gravity Cavity

GC 1816, GC 1832

*Most Economical*

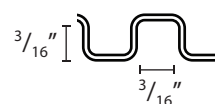


GC 1816 | GC 1832

### Sure Cavity

SC 5016, SC 5032

*Better Protection*

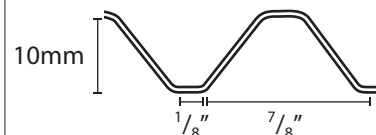


SC 5016 | SC 5032

### 10mm Sure Cavity

SCMM 2516, SCMM 2532

*Best Protection & Meets Code in Canada*



SCMM 2516 | SCMM 2532

|                             |                       |                       |                       |                       |                       |                       |
|-----------------------------|-----------------------|-----------------------|-----------------------|-----------------------|-----------------------|-----------------------|
| <b>Depth (drainage gap)</b> | 1/8 in (3mm)          |                       | 3/16 in (5mm)         |                       | 3/8 in (10mm)         |                       |
| <b>Roll Length</b>          | 76 ft                 |                       | 50 ft                 |                       | 25 ft                 |                       |
| <b>Roll Width</b>           | 15.75 in              | 31.5 in               | 15.75 in              | 31.5 in               | 15.75 in              | 31.5 in               |
| <b>Roll Coverage</b>        | 100 ft <sup>2</sup>   | 200 ft <sup>2</sup>   | 66 ft <sup>2</sup>    | 132 ft <sup>2</sup>   | 33 ft <sup>2</sup>    | 66 ft <sup>2</sup>    |
| <b>Pallet</b>               | 6,400 ft <sup>2</sup> | 6,400 ft <sup>2</sup> | 4,224 ft <sup>2</sup> | 4,224 ft <sup>2</sup> | 2,112 ft <sup>2</sup> | 2,112 ft <sup>2</sup> |